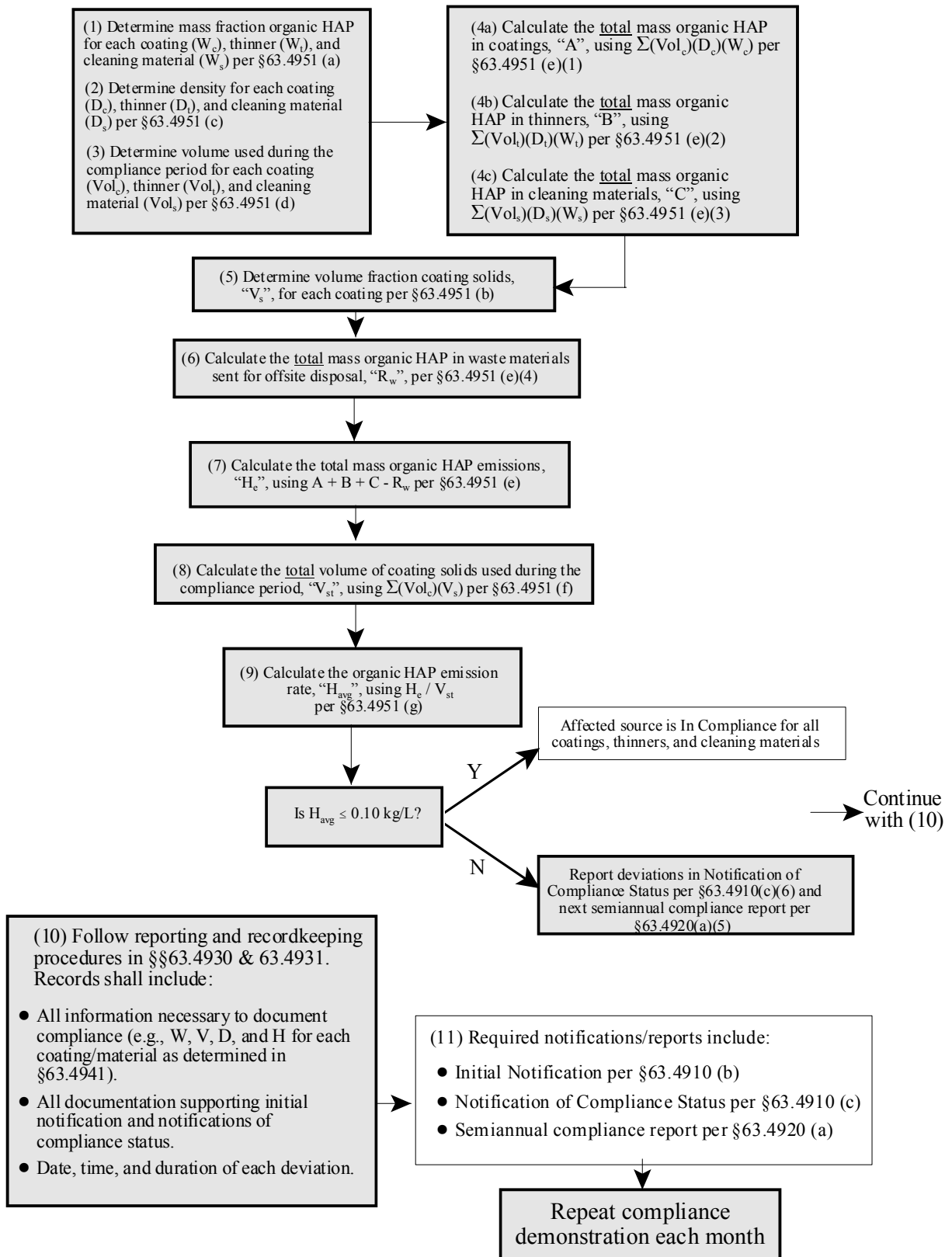


Metal Furniture NESHAP Compliance Demonstration Flowchart for EMISSION RATE WITHOUT ADD-ON CONTROLS OPTION ^{(1),(2)} Under §63.4891(b)



Notes:

affected source: coating operation or group of coating operations (see §63.4882)

HAP: hazardous air pollutant

W = *mass fraction organic HAP for each material (coating, thinner, or cleaning material)*
(kg/kg)

mass organic HAP / mass of material

V_s = *volume fraction coating solids (L/L)*

volume of coating solids / volume of coating

D = *density of each material (coating, thinner, or cleaning material) (kg/L)*

mass material / volume material

Vol = *volume of each material (coating, thinner, or cleaning material) (L)*

R_w = *total mass organic HAP in waste materials sent offsite (kg)*

H_e = *mass organic HAP emissions (kg)*

total mass organic HAP in coatings + total mass organic HAP in thinners + total mass organic HAP in cleaning materials - total mass organic HAP in waste materials sent offsite

mass organic HAP (coating, thinner, or cleaning material) = Vol * D * W

total mass organic HAP is the sum of this product for all coatings thinners, and cleaning materials

V_{st} = *total volume coating solids (L)*

total volume used for each coating * volume fraction coating solids

V_{st} is the sum of this product for all coatings

(1) Compliance dates (see §63.4883)

existing source - May 23, 2006

new or reconstructed source - May 23, 2003, if date of initial startup is before May 23, 2003.

If initial startup is after May 23, 2003, then compliance date is date of initial startup.

(2) Evaluation of compliance considers materials in the condition received from manufacturer or supplier.